



**AlluGuard**  
*Quality Garage Doors*



## Insulated Roller Garage Doors



Welcome to your guide to the very  
best insulated roller garage doors

# Trusted and Quality Assured.

Choosing a product for your home as important as a garage door is not something you do very often. Perhaps only once or twice in a lifetime! AlluGuard insulated roller garage doors are quality assured, built to last and packed full of clever features...

## Why Choose AlluGuard?



### Convenient electric operation

with a powerful yet quiet motor concealed within the barrel and a manual override that keeps your door operational in case of power failure.



### Weather proof

design with insulated slats, helps keep the weather out (and keeps the heat in) so your garage is no longer a draughty no-go area.



### They are covered by fair warranties

AlluGuard roller doors are covered by a comprehensive warranty of up to two years.



### They are quality assured & safe

Every door is manufactured to our ISO 9001 certified quality systems and UKCA marked and safety compliant.



### They take up less space

than any other garage door, rolling up into a compact space with no tracks projecting into the garage.



### Make extra space

by fitting behind the opening, giving you a wider and taller opening. Vertical opening means the door doesn't project out onto your drive or into the garage space, allowing you to park up to the door inside and out.



### They look simply stunning

The gentle curve and the subtle lines of each slat are finished in a tough polyester powder coating to create an overall look that is classic and contemporary in equal measure.





AlluGuard 77 in Black

## AlluGuard | 77

## AlluGuard | 55

### What's the Difference?

Similar features only smaller! AlluGuard 55 uses a smaller slat than the AlluGuard 77 that allows it to roll tighter requiring less space at the top of the door. It's the ideal choice when headroom is especially limited.



AlluGuard 55 in Anthracite

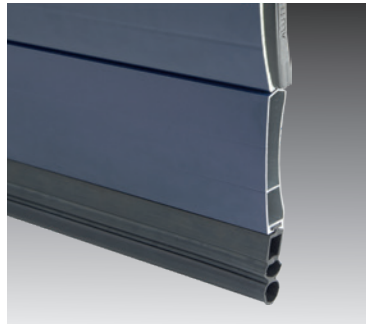
# Security.

## Security Matters

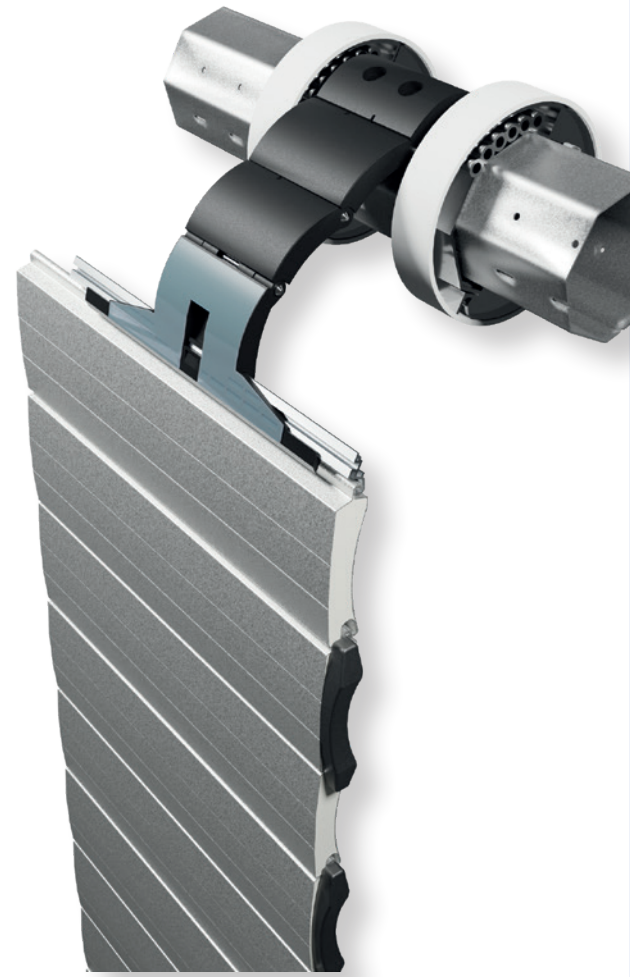
Bikes, fitness equipment, tools whatever you keep in your garage in addition to your car, it's always a surprise when you add up the value – often several thousand pounds! The AlluGuard 77 offers excellent security thanks to a powerful motor that holds the curtain locked when closed and strong locking straps that prevent forced lifting of the door.



Heavy duty extruded aluminium guides secure the door at the sides.



The extruded aluminium bottom slat adds extra strength to resist forcing.



# Insulation.

## Fully Insulated & Finished to Perfection

AlluGuard is designed to give thermal and acoustic insulating properties much higher than the average garage door. 'CFC' free polyurethane foam within the aluminium lath plus high performance weather sealing ensures good insulation. It's perfect if you want to use your garage as a work/play room or your garage is under a bedroom. The corrosion resistant aluminium laths are light yet strong and can be finished in a stunning range of colours.



# Convenience.

## No Wasted Space

Roller garage doors operate vertically, rolling into a compact coil within the garage, above the opening. Not only does this mean you can park right up to the garage door, but valuable space is not taken up inside your garage which could be used for storage.

## Takes Up Less Space

Because it rolls 'tighter' than other roller doors, AlluGuard takes up less headroom when open – just 300 mm for the AlluGuard 77 and even less for the AlluGuard 55 at 205 mm. The door typically sits behind the brickwork, allowing any existing frame to be removed. The compact side runners and increased drive-through space give you much more room to manoeuvre in and out of your garage. Doors can even be fitted externally where headroom is extremely limited.

## Good Looks Inside & Out

The outside of the door is simply stunning, the inside equally impressive. AlluGuard garage doors come with stylish white, black or anthracite guides as standard and the optional box cover gives an incredibly neat and compact finish – with no wasted space inside your garage!



*Extra drive through width of up to six inches – 150 mm helps keep your wing mirrors unmarked!*



*The neat inside is made even tidier with the option of a box to house the door roll.*



More space – park right up to the garage door

# Colours.

## A Wide Choice of Finishes

AlluGuard's wide choice of finishes ensure your new garage door not only looks good for years to come, but also complement the look of your home.



### The door curtain

The door curtain is available in any of the corrosion-resistant colours shown opposite, for a durable finish that lasts.



### The door guides

The guides are supplied in white, black or anthracite as standard, for a sleek and stylish look.

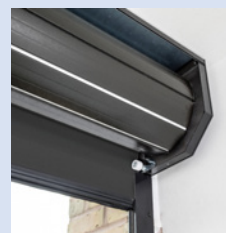


### The door roll box

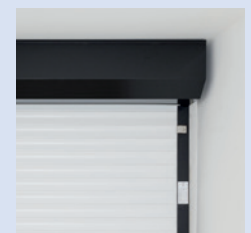
For a neat and tidy finish, the full box option completely covers the door roll. Available to match the guides or in any colour of your choice.



The standard AlluGuard 77 configuration is with no roll box.



The half box option helps prevent debris dropping onto the door roll. Supplied as standard on the AlluGuard 55.



The full box option encloses the door roll for a very neat installation.

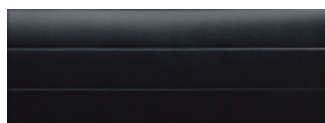


# AlluGuard | 77      AlluGuard | 55

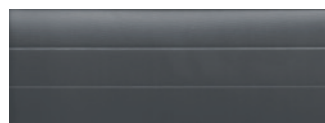
## Standard Colours



White RAL 9016

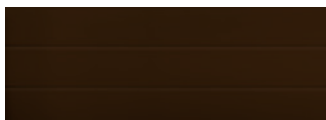


Black RAL 9005



Anthracite RAL 7016

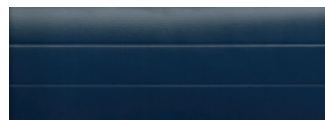
## Premium Colours (surcharge applies)



Brown RAL 8014



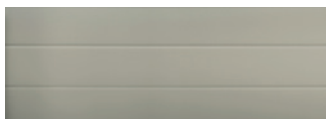
Chartwell Green



Navy Blue RAL 5011



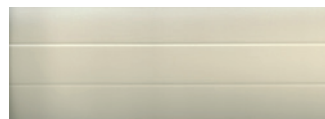
Burgundy RAL 3004



Light Beige BS 08B17



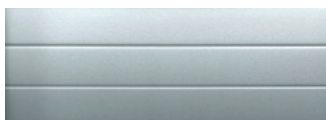
Fir Green RAL 6009



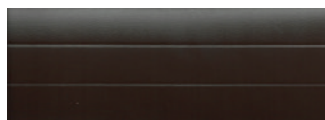
Ivory RAL 1015



Agate Grey RAL 7038



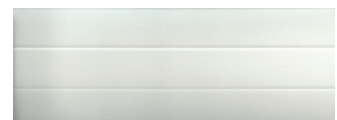
Silver Metallic RAL 9006



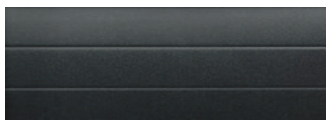
Dark Brown RAL 8019



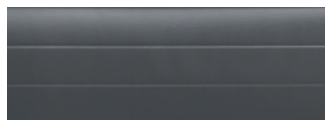
Moss Green RAL 6005



Cream White RAL 9001



Graphite\*



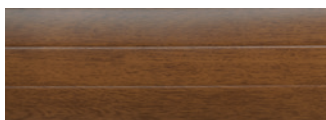
Slate Grey RAL 7015\*



Duck Egg Blue\*



Irish Oak\*



Golden Oak\*



Rosewood\*

\*Only available on AlluGuard 77

The printing process does not allow exact reproduction of the colours. Colour references quoted are the nearest standard RAL. They will not be an exact match and are intended as a guide only.



# Remote Control.

## Effortless Performance

Remote control makes using your door effortless and secure. No need to get out of your car on a wet and windy night! With two handsets supplied with every Remote Controlled door, garage door access has never been so easy and affordable.

## Controls to Suit You

With a range of controls available, choosing the ideal way to operate your doors couldn't be easier.

## All AlluGuard Remote Controlled Garage Doors come with:

- Wireless or wired control unit
- 2 keyfob transmitters
- Safety edge
- Built-in anti-entrapment technology



### Teleco Simple Control Unit

The Teleco Simple wired control unit makes operating your door easy and safe. Featuring push buttons to operate the door, an auto time close function and the option to set-up a safety edge exclusion zone 50 mm from the floor, ensuring full closure each time, even on uneven surfaces. Supplied with two 2-channel handsets.



### Safety Edge

*Peace of mind protection for you and your family. The doors' bottom edge rubber seal incorporates a sensor along its length to detect obstructions and instantly stop and reverse the door a short distance when closing.*





## Switch Operated.

### Our best value garage door

If you don't use your garage door very often or your garage is mainly accessed via an internal door, the Switch Operated AlluGuard is the ideal budget-friendly choice.

With an indoor hold to run control, simply press and hold one button to open the door and hold one button to close. For easy access from outside the garage, opt for an outdoor key switch instead.

Or enjoy the convenience of both indoor and outdoor control by combining the Genesis control unit with an outdoor key switch.



Indoor Rocker Switch

**It must only be possible to operate the hold-to-run control in direct sight of the door.**

Door Hardware Federation



Outdoor Key Switch



Genesis Control Unit

AlluGuard 77 in Duck Egg Blue

# Options and Accessories.

## Door Options & Accessories

Insulated roller garage doors are wonderfully simple in everyday use thanks to smart technology.



### Curtain roll box

Half and full boxes are available to suit AlluGuard 77 doors. Either option will take up 300 mm headroom on top of the guide height. AlluGuard 55 doors are supplied with half box as standard. Both half or full box has 205 mm headroom on top of the guide height.



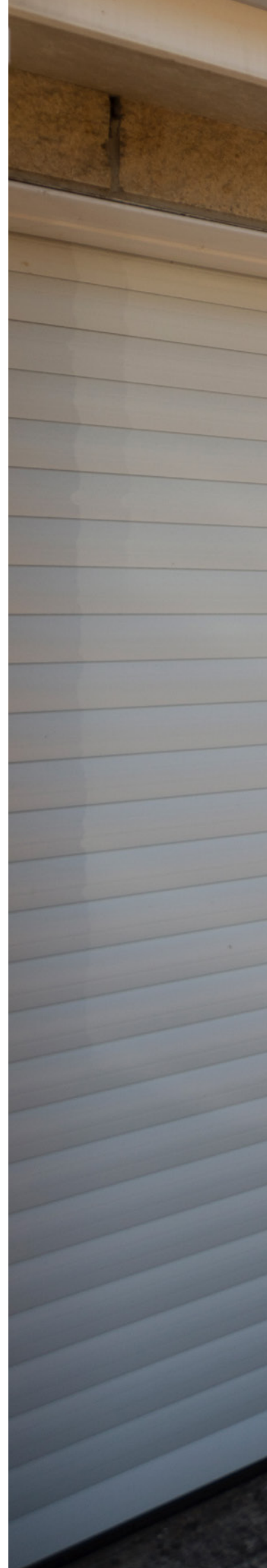
### Manual exterior release

For use in emergencies or in the event of power failure. Allows the door to be opened manually from outside the garage – essential if the garage has no other entry point. The exterior override can be fitted through the wall, or the door's guide if the door is fitted within the opening, and includes a lockable cover.



### Lockable override cover

A lockable cover to protect the manual override access point on externally fitted doors.





AlluGuard 77 in White



# UK CA

## The AlluGuard Safety Standard

Safety always comes first at AlluGuard. All our products carry a UKCA mark and have been independently tested for safe operation and compliance with legislation to BS EN 13241:2003 and A2:2016.

## Safety – UKCA Marking

It is against the law to install a power operated garage door in the UK without complying with The Machinery Directive. To comply with the Machinery Directive both the door and the motor and controller used in the installation must have a Declaration of Incorporation from the manufacturer. On completion of the installation the installer must provide a Declaration of Conformity and apply a UKCA mark giving details of the installation to the door / motor and controller combination, which is now classed as a machine. The installer must issue to the customer a Declaration of Conformity, maintenance and operation instructions on the completion of the installation. The installer must hold copies of both the Declaration of Incorporation and the Declaration of Conformity on a technical file for inspection by the relevant authorities. If any of the above requirements are not fulfilled the Installation is illegal and may be unsafe. Please ensure for your own safety and peace-of mind that whoever installs your electric motor and controller is both willing and able to fulfil these requirements; if they are not – do not use them. Choose a member of the DHF Garage Door Installer Group who CAN and WILL install your motor and controller safely and legally.

## Peace-of-Mind Warranties

AlluGuard roller garage doors are guaranteed against any form of manufacturing defect with a parts only warranty for a period of 2 years from the date of original purchase. AlluGuard roller garage doors' exterior finish is guaranteed to provide an effective weatherproof membrane that will resist perforation of the substrate from the weather side due to corrosion for a period of 2 years. Externally fitted reverse roll AlluGuard roller garage doors will resist perforation of the substrate from the weather side due to corrosion for a period of 1 year. Colour change or fade to the exterior surface will be limited and uniform during the guarantee. AlluDrive motors and the Genesis and Teleco Simple units are guaranteed for a period of 2 years from the date of purchase. Guarantees are subject to conditions – please visit [www.alluguard/warranty](http://www.alluguard/warranty) for full details.



Incorporating Abbey Garage Doors & Abbey Awnings

## Important Information

High winds and high temperatures on double doors can cause increased deflection of the door. It is the installer's responsibility to ensure that the door is spaced off the wall sufficiently to allow for door movement during these extreme weather conditions.

Darker coloured double doors that are exposed to significant direct sunlight may be susceptible to expansion which may interfere with the operation of the door.

Whilst the garage door profiles are primed and coated for the external environment – any doors fitted in coastal environments may be at risk of deterioration due to the weather conditions. Ensure you keep your door clean and follow the instructions for cleaning the door in the operating and maintenance instructions.

The nature of roller garage doors means marking may appear on the internal side of the slats over time. Occasionally some marking may occur at the top of the concave (coil) side of the curtain over time. This is unavoidable and due to prolonged contact with the locking system. On doors which are installed externally this will be visible on the outside.

Access & Security Systems Ltd Head

Office and Showroom Unit 7,

Bacchus House Aldermaston

Berkshire

RG7 8EN

Tel: 0118 981 7300

[info@rollergaragedoorscentre.co.uk](mailto:info@rollergaragedoorscentre.co.uk)



[alluguard.co.uk](http://alluguard.co.uk)